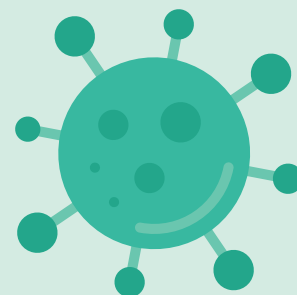




reduced service timetables



At **trentbarton** we know you trust us to get you where you're going in a safe, comfortable and hassle free manner. We take this responsibility incredibly seriously. We want to reassure you that the safety and well-being of customers and colleagues is our top priority and we have taken all necessary measures to aid in stopping wherever possible the spread of Coronavirus.

Unsurprisingly we have seen significant reductions in usage since the closure of schools, shops, hospitality venues and leisure facilities. Public transport does however play a pivotal role in facilitating keyworkers getting to and from their locations of work, including our amazing NHS staff.

We are therefore making the below service changes to match our resource with current levels of demand. This will ensure we protect our business, and the hundreds of team members we employ, whilst providing vital services to maintain important travel links within our communities. We are obviously unable to continue to serve all locations but have taken time to review current journey levels to make sure we utilise the resources we have where it is needed most.

All tickets & fares, including validation periods, will remain unchanged with the exception of the concessionary pass holders who are now able to use their bus pass before 9.30am, allowing them to take advantage of the special supermarket opening times.

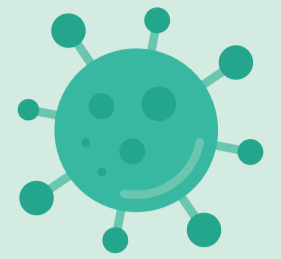
During this time we are allowing customers to freeze any pre-purchased products, including any corresponding subscriptions. To do this we are asking customers to speak to contact our customer services team by phone on **01773 712265**, email at **talk@trentbarton.co.uk** or by our social media channels (**@trentbartonland**).

We will continue to keep our website and social media feeds up to date for the very latest information and changes.

The changes on the next page will take place from Sunday 29 March 2020.



Jeff
managing director



reduced service timetables

from Sunday 29 March 2020

	Mondays-Saturdays	Sundays	customer alternatives
Derby			
swift	no service	Sunday service	Customers can use Ashborne Community Transport ashbournect.org.uk
harlequin	no service	no service	V3 will serve Heatherton village hourly as it does in the evening and at weekends
the sixes	every 30 minutes Belper to Derby	special Sunday service	Transpeak is running every 2 hours serving Bakewell-Matlock-Belper-Derby highpeakbuses.com
red arrow	hourly	special Sunday service	
royal derby	20 minutes during peaks, no hospital loop, hourly off peak	no service	Customers can also use the mickleover , the villager or X38 from Derby to Royal Derby Hospital; skylink Derby along London Road use the Midland Road stop; V3 along Burton Road
spondon flyer	no service	Sunday service	ilkeston flyer is running every 30 minutes
the allestree	no service	special Sunday service	Customers can use Derbyshire Connect derbyshire.gov.uk
the mickleover	every 30 minutes	special Sunday service	
the villager	hourly	special Sunday service	
V3	hourly (minus the first round trip)	special Sunday service	
X38	no service	Sunday service	Customers can use Arriva X38 arrivabus.co.uk , the villager , or V3
the comet	no service	special Sunday service	Customers can use the nines between Alfreton and Derby; and X1, 54, 56 between Alfreton and Chesterfield stagecoachbus.com
Langley Mill			
1A	no service	no service	rainbow one offers some alternatives
21/20	hourly	service 20 running as normal	
the two	hourly	special Sunday service	
27	hourly	no service	
H1	hourly (without Alfreton leg)	Sunday service	Customers can use rainbow one between Alfreton and Heanor
ilkeston flyer	every 30 minutes	Sunday service	
rainbow one	every 30 minutes (with short journeys removed and just Ripley and Alfreton legs)	special Sunday service	
rapid one	deregistered	deregistered	Customers should use rainbow one as an alternative
amberline	no service	special Sunday service	Customers can use; rainbow one between Kimberly-Eastwood-Heanor; H1 between Heanor-Smalley; the nines between Kilburn-Derby
black cat	no service	no service	Customers can use 21 between Heanor-Ilkeston (inc. Ilkeston Hospital), and ilkeston flyer between ilkeston and Derby
my15	hourly (Ilkeston to Sawley only)	special Sunday service	Customers for the airport can connect with skylink Nottingham in Long Eaton
Sutton			
90	no service	no service	the nines and the threes will still be serving King's Mill Hospital between Mansfield and Sutton
the nines	every 30 minutes (9.3 only)	special Sunday service	
141	no service	no service	
the threes	every 30 minutes (3A & 3C only)	special Sunday service	
connect	every 30 minutes	Sunday service	
Nottingham			
indigo	every 30 minutes, hourly to Derby	Sunday service	
the cotgrave	hourly	special Sunday service	
the keyworth	hourly	special Sunday service	
mainline	every 40 minutes	special Sunday service	
rushcliffe villager	no service	no service	mainline will continue to serve Bingham-Radcliffe-West Bridgford -Nottingham
i4	every 30 minutes (Nottingham to Sandiacre only)	special Sunday service	Customers wanting to access QMC from Borrowash-Spondon-Chaddeston should use indigo
skylink Nottingham	every 30 minutes	Sunday service	
skylink express	hourly	Sunday service	
the calverton	hourly	special Sunday service	
Kinchbus			
2	hourly	special Sunday service	
5	no service	no service	Kinchbus 12 is running hourly
sprint	no service	Uni out Sunday service	Kinchbus 12 is running hourly
9	no service	Sunday service	Customers travelling between Loughborough and Nottingham should use NCT South Notts 1 nctx.co.uk
11/12	hourly	Sunday service	
skylink Derby	every 30 minutes (as now)	Sunday service	