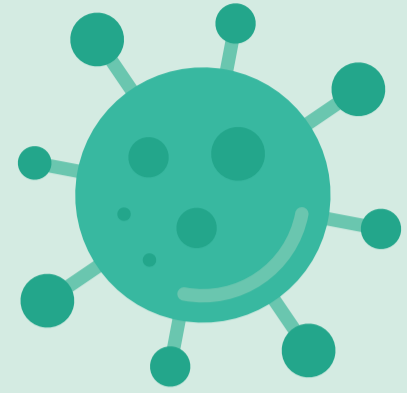


service changes

from 14/15 June 2020



As lockdown restrictions continue to relax we are making plans to ensure that we are here when people need us. We will therefore be making enhancements to a number of services from 14 June with further changes coming in the weeks following. The changes will focus on supplying additional capacity where it is most needed to enable adequate social distancing wherever possible. In some cases services will return to pre-COVID levels.

We review customer numbers and demand levels on a daily basis and are also working closely with local authorities, employment hubs, and wider stakeholders to allow us to predict increases in demand wherever possible, enabling us to make changes in time for when they are needed.

We will continue to ensure we operate to a COVID-secure standard and make changes or adjustments as is necessary following any further advice or guidance. From 15 June it will become a requirement to wear a face covering on buses (barring a small number of exemptions). We have been advising the use of face coverings for a number of weeks now and we have no doubt that our customers will continue to be our partners in our joint effort to make everyone feel comfortable and confident about travelling.

From 15 June the use of concessionary bus passes will return to pre-COVID times of day. Across all **trentbarton** services, in line with other operators in the area, and as agreed with local authority partners, concessionary passes will only be accepted after 9.30am Monday to Friday and at any time at the weekend. The changes from Monday will also enhance our ability to help commuters and other peak travellers maintain social distancing on board buses.

A summary of the changes to services from 14 June is outlined below:

- **black cat** | service reintroduced 2 hourly, Monday-Saturday
- **the calverton** | frequency increase to every 30 mins, Monday-Saturday
- **the cotgrave** | frequency increase to every 20 mins, Monday-Saturday
- **the keyworth** | frequency increase to every 30 mins, Monday-Saturday
- **Kinchbus 5** | service reintroduced hourly, Monday-Saturday
- **Kinchbus 11/12** | Kinchbus 11 reintroduced hourly, Monday-Saturday giving an increased combined 30 mins frequency with Kinchbus 12
- **the sixes** | frequency increase to every 30 mins Derby to Belper, hourly 6.1 extensions to Bakewell & hourly 6E extensions to Belper estates and Ripley, Monday-Saturday
- **skylink Derby** | frequency increase to every 20 mins, Monday-Saturday
- **skylink Nottingham** | frequency increase to every 20 mins Nottingham to EMA & East Midlands Gateway, Monday-Saturday
- **the two** | frequency increase to every 15 mins, Monday-Saturday

Further details of the changes and all other timetables can be found at trentbarton.co.uk/coronavirus.

We appreciate your support at this time. Stay safe.



Jeff
managing director